



juntaemcor extra

TECHNICAL DATA SHEET

TOPECA, Lda
Rua do Mosqueiro
2490-115 Cercal – Ourém
PORTUGAL

Tel.: 00 351 – 249 580 070
Fax.: 00 351 – 249 580 079

TOPECA
FÁBRICA DE PRODUTOS PARA CONSTRUÇÃO

geral@topeca.pt
www.topeca.pt

juntaemcor

extra

bonding and grouting

mortar for joints of 30 to 100mm



- rustic finish

use

Realization of wide joints from 30 to 100 mm in case of natural stone, brick facings, decorative, floor and wall coverings in indoor and outdoor.

Improves aesthetics.

Joint hydrophobic.

Allows different finishes (smooth, brushed, esponjado).

Constant and uniform colors.

Lets hold together without cracking.

surfaces

- Ceramic pieces;
- Natural stone.



CE marking

CG2W
European standards
EN 13888

juntaemcor extra

mortar for joints of 30 to 100mm

bonding and grouting

recommendations

In places subject to high pressure cleaning (≥ 80 bar), and aggressive products such as acids and detergents, add the joint with Latex Topeca.

Protect limestones and absorbent parts before grouting with ITOP - protective surfaces. The ITOP will create a non-absorbent surface film, which prevents the pieces of colored pigments absorb the extra Juntaemcor and facilitates cleaning. After the grouting and the joint is dry, you can protect the surface with a product range Silitop avoiding the appearance of stains and buildup of dirt, fungus, etc.. (refer to product data sheets Silitop range, choosing the most appropriate to your situation).

Do not apply to direct sunlight or on hot parts or finished of bonding.

You should make preliminary tests.

In the preparation of Juntaemcor Extra to use clean water container and to avoid contamination which cause color changes.

For cleaning of accumulated dirt during construction using Toplimpa.

Should take into account the amount of water to be added to the product, since the consistency of the pulp varies the width of the joint. For wider joints the mortar must be presented with greater consistency, therefore less water.

The dosage of water and mixing time should be constant. Excess water may favor the appearance of stains (efflorescence).

With warm weather, to get joints resistant should make the spray with water, followed within 24 hours of application.

Observe the expansion joints and cracking in the existing surface.

composition and characteristics

Composition:

Cement, silica compound of particle size selected, specific additives and pigments.

Characteristics:

Open time: 2 hours.

Time to harden: 3-4 hours.

Slight Circulation, after 24 hours.

Application temperature: $+5^{\circ}\text{C}$ to $+30^{\circ}\text{C}$.

Compressive strength $> 12\text{ N/mm}^2$

Flexural strength $> 3\text{ N/mm}^2$

Water absorption after 30 minutes $< 2\text{ g}$

Water absorption after 240 minutes $< 5\text{ g}$

NOTE: Results corresponding to average values obtained under laboratory conditions, following the specifications of EN 13888, these results may vary with application conditions.

colours

See table color grading.

consumption

| Tile size (cm) | juntaemcor extra (kg/m ²) for a piece of 10mm thickness | | |
|----------------|---|-------|--------|
| | joint width | | |
| | 30 mm | 50 mm | 100 mm |
| 20x20 | 6,00 | 10,00 | 20,00 |
| 30x30 | 4,00 | 6,67 | 13,33 |
| 40x40 | 3,00 | 5,00 | 10,00 |
| 50x50 | 2,40 | 4,00 | 8,00 |

available in

Sacks of 25 Kg

Pallets with 60 sacks.

storage

1 year from date of manufacture in unopened container and protected from moisture.



juntaemcor extra

mortar for joints of 30 to 100mm

bonding and grouting

preparation of surface

Confirm that the space dedicated to joints is dry and free of glue or cement.

Clear if necessary. This operation guarantees a good adhesion of the joint, a drying and homogeneous color.

Protecting with iTop parts absorbent to prevent the encrustation of the color.



application

Mix preferably with a slow speed mixer with 3.5 liters (as given for guidance to a joint 10 cm) of water per bag of 25 kg.

Fill the joints with the help of a spoon.

Remove excess mortar.

Compress the joints with a spoon when the mortar joints start hardening.

Clean the parts with a damp sponge or a sponge float before the hardening of the joint.

Esponjado Finish: Clean the joints with a sponge without deslavar when the board started its hardening.

Brushed Finish: Brush the joints with a brush when you start hardening.

Smooth Finish: Smooth the joints together with a spoon or a spoon "cat tongue" just after the completion of these.



juntaemcor extra

mortar for joints of 30 to 100mm

bonding and grouting

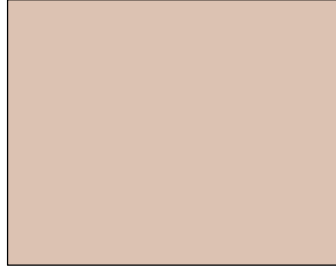
colours

dark grey



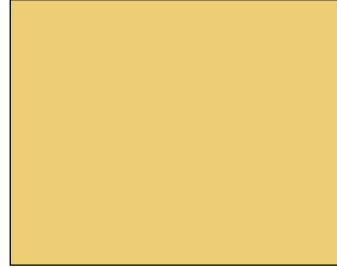
108702

stone



108802

beige



108902

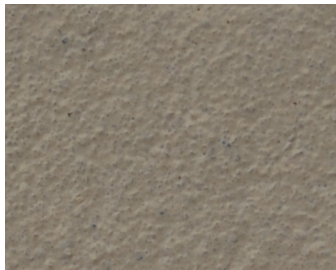
coal



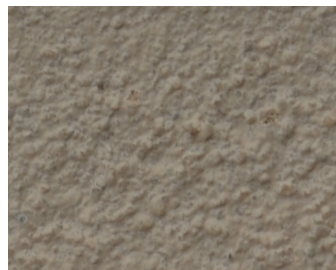
102103

types of finish

smooth



esponjado



brushed



The colors displayed are printing colors may be slightly different colors marketed. Special colors are dependent on quantity. The gradation may be found on shelves available from your dealer.