

tuforte[®] FT

acabamento



TECHNICAL DATA SHEET

TOPECA, Lda
Rua do Mosqueiro
2490-115 Cercal – Ourém
PORTUGAL

Tel.: 00 351 – 249 580 070
Fax.: 00 351 – 249 580 079

TOPECA
FÁBRICA DE PRODUTOS PARA CONSTRUÇÃO

geral@topeca.pt
www.topeca.pt

tuforte FT

acabamento

levelling and regularization

levelling of indoor walls and ceilings



use

Levelling and fine finish of new or old indoor walls and ceilings.
On joints in soft plaster board.
Fills fissures and cracks.

surfaces

- Plaster;
- Concrete;
- Render;
- Painting in good state (when firm and resistant);
- Plasterboard.



CE marking

B2/20/2
European standards
EN 13279-1

tuforte FT acabamentoo

levelling of indoor walls and ceilings

levelling and regularization

recommendations

Do not apply Tuforte FT after the mixture has started to harden.

Use bands of fibre glass mesh on joints and fissures or on unstable cracks.

With surfaces painted with non-absorbent paints (for example enamel paints) Topeca Tuforte FT Acabamento with Latex should be added to the first layer (approximately 0.5litros per bag).

On surfaces which are rough or which are particularly uneven use Tuforte G Enchimento.

composition and characteristics

Composition:

Special plasters, silica compounds and specific fillers.

Characteristics:

Usage time of the mix: 3 hours.

Waiting time in order to coating: 2 to 3 days.

Minimum thickness per layer: 0 to 2mm.

Density of powder: 990 kg/m³.

Dry to touch = 4 hours.

Apply at temperatures of +5 ° C to +30 ° C.

Note: Results obtained in standard conditions according to EN 13297-1. These results may vary depending on application conditions.

colour

White

consumption

1 Kg/m² and per mm of thickness.

available in

Sacks of 20 kg.

Pallets with 48 sacks.

storage

1 year after manufacture date in closed original bag in damp free environment.



tuforte FT acabamentoo

levelling of indoor walls and ceilings

levelling and regularization

preparation of surface

Surfaces must be clean and free of dust and oil.

Remove any loose particles.

In kitchens, cafes and restaurants ensure surfaces are completely free of grease and smoke.



application

Mechanical mixing with a slow speed mixer is recommended. Mix Tuforte FT Acabamento with 11-12 litres of water until an even and lump free paste is obtained. Add the powder by sprinkling into the water.

Adjust the paste to the desired consistency by carefully adding more powder or water. The consistency will depend on the type of job. A harder paste should be used when greater thicknesses are required for levelling and a more fluid/creamy paste should be used with lesser thicknesses.

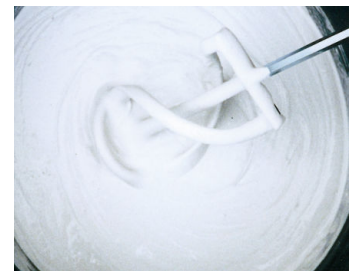
Apply one or more layers using spatula or metal cement trowel.

Several layers may be applied.

Waiting time between layers will depend on the ambient temperature, the type of surface and if the second layer is the same thickness as the first layer.

After drying, finish surface with sandpaper.

Paper coverings or paint may be applied after 2 to 3 days.



associated products

Regulador de FundoTopeca - Primary background before applying paint.



TOPECA, Lda - Rua do Mosqueiro - 2490-115 Cercal – Ourém - PORTUGAL

Tel.: 00 351 – 249 580 070 / Fax.: 00 351 – 249 580 079

www.topeca.pt / geral@topeca.pt

Q.5.06.02.03-05

09/07/2013