



TECHNICAL DATA SHEET

TOPECA, Lda
Rua do Mosqueiro
2490-115 Cercal – Ourém
PORTUGAL

Tel: 00 351 – 249 580 070
Fax: 00 351 – 249 580 079

TOPECA
FÁBRICA DE PRODUTOS PARA CONSTRUÇÃO

geral@topeca.pt
www.topeca.pt

rebetop gran

mortars for coatings

thin layer organic coating with coloured grains of sand



- great flexibility

use

Decorative coating for new or old façades. Rebetop Gran is a paste which when dry turns into a grainy plasticized film.

For the decoration of indoor walls (stair wall panelling, stair wells, decorative panels, pillars, etc)

Decorative coating for outdoor thermal insulation systems.

surfaces

Outside:

- Render;
- Concrete;
- Painting adherent and resistant;
- Thermal insulation systems-ETICS;
- Pre-fabricated sheeting;
- Levelling mortars.

Inside:

- Render;
- Wood;
- Concrete;
- Plaster;
- Plates of plasterboard;
- Painting adherent and resistant;



rebetop gran

thin layer organic coating with coloured grains of sand

mortars for coatings

recommendations

Do not apply to horizontal surfaces or surfaces angled at less than 45°.

Do not apply to wet surfaces.

Protect upper edges of coating from rain water penetration by using protective strips.

Do not apply to:

- Frozen surfaces or when a risk of frost exists in next 24 hours;
- Very hot surfaces;
- When weather is excessively hot;
- When raining or under conditions of high atmospheric humidity.

Work should be carried out without interruption. Patches can spoil decorative finish.

Tools should be cleaned with water before product dries.

Respect expansion joints on surfaces by applying suitable seal.

composition and characteristics

Composition:

Resins dispersed in water, colored sand and special additives.

Characteristics:

Application temperature: 5°C to 30°C.

Waiting time before carrying out finish: 15-30 minutes.

Granulometric size (ref^a F0) = (0,5-1)mm

Granulometric size (ref^a F1) = (1-1,4)mm

Granulometric size (ref^a F2) = (1,4-2)mm

Note: Times given were calculated under normal conditions (Temperature 20°C)

colour

See color chart on the next page.

consumption

In wall and without irregularities:

F0-2.5 Kg/m²

F1-4 Kg/m²

F2-5 kg/m²

available in

Buckets of 20 kg.

Pallets with 27 buckets.

Ref^a F0 Thin (0,5 – 1) mm

Ref^a F1 Average (1 – 1,4) mm

Ref^a F2 Thick(1,4 – 2)mm

storage

1 year from date of manufacture in a sealed packet stored in a damp free environment.



rebetop gran

thin layer organic coating with coloured grains of sand

mortars for coatings

preparation of surface

Surfaces must be clean, flat, dry, and free of grease and release agents.

With painted surfaces, always check that paint is solid and adhering properly to surface.

When working indoors on porous surfaces such as plaster or plaster board, apply a layer of TOPECA Background Regulator.

Before applying Rebetop Gran, apply one coat of Rebetop Primer with a woollen roller.

With wooden surfaces, first apply Toprim primer.



application

Mix with electric mixer so as to obtain even paste.



Spread product on surface with stainless steel trowel, applying from bottom to top giving a constant thickness the same as grain size.



Level out surface passing over with trowel horizontally and vertically until an even layer is obtained.



Allow Rebetop Gran to adhere a little then finish with trowel. Wash trowel several times to improve lubrication and facilitate finishing.

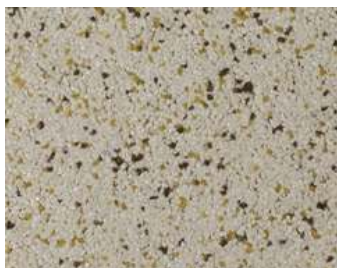


rebetop gran

thin layer organic coating with coloured grains of sand

mortars for coatings

F0



323

129109

F1



316

126206



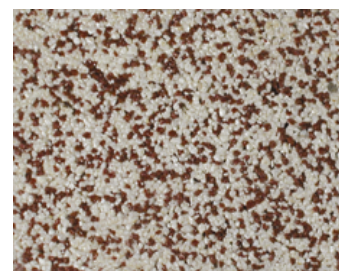
323

125406



328

125306



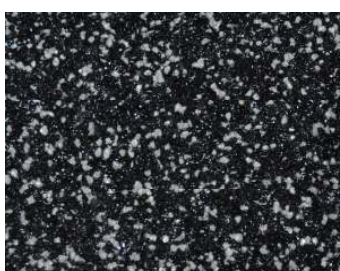
333

125006



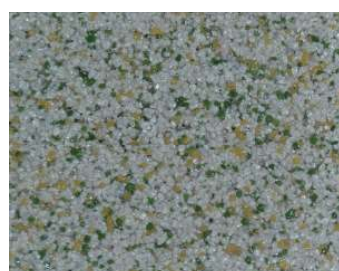
334

125206



340

126406



344

125706



350

125506

Product produced on demand.
Other colors and measures, see us
Printed colors may be slightly different colors marketed.
See the color catalog from your dealer.



TOPECA, Lda - Rua do Mosqueiro - 2490-115 Cercal - Ourém - PORTUGAL

Tel.: 00 351 - 249 580 070 / Fax.: 00 351 - 249 580 079

www.topeca.pt / geral@topeca.pt

Q.5.06.04.08-01

16/11/2010

rebetop gran

thin layer organic coating with coloured grains of sand

mortars for coatings

F1



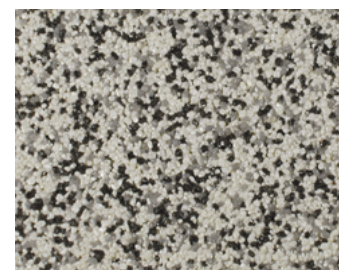
352



362



363



367

126506

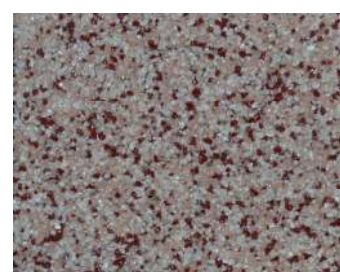
126006

125906

125106



368



370



384

126306

125606

125806

F2



102



109



132



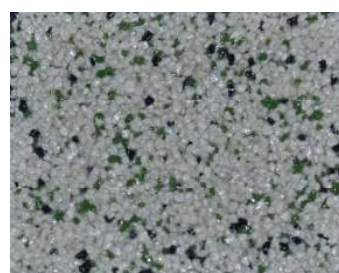
141

120606

120109

120206

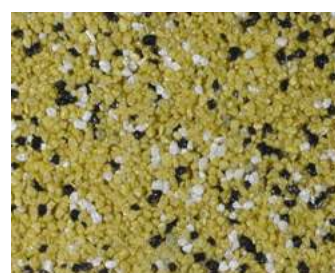
120006



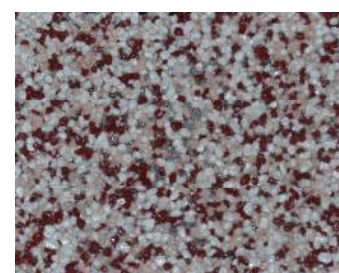
191



199



217



218

120906

120306

120406

123406



TOPECA, Lda - Rua do Mosqueiro - 2490-115 Cercal - Ourém - PORTUGAL

Tel.: 00 351 - 249 580 070 / Fax.: 00 351 - 249 580 079

www.topeca.pt / geral@topeca.pt

Q.5.06.04.08-01

16/11/2010

rebetop gran

thin layer organic coating with coloured grains of sand

mortars for coatings

F2



439

123206



447

123006



449

126106



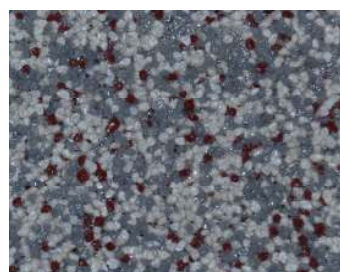
450

120506



511

121006



527

120806



567

120706