

# topeca

## floor desmoldante



### TECHNICAL DATA SHEET

TOPECA, Lda  
Rua D. Nuno Alvares Pereira, 53  
2490-114 Cercal – Ourém  
PORTUGAL

Tel.: 00 351 – 249 580 070  
Fax.: 00 351 – 249 580 079

**TOPECA**  
FÁBRICA DE PRODUTOS PARA CONSTRUÇÃO

[geral@topeca.pt](mailto:geral@topeca.pt)  
[www.topeca.pt](http://www.topeca.pt)

topeca  
floor desmoldante

decorative flooring

colored powder release agent for molds used



## Use

Colored powder release agent for molds used in the printed concrete.  
Prevents mold becomes adherent to the concrete, easy to print the templates on the pavement.  
Used in the same color of printed concrete, or different color, particularly gray, when you want to make an effect of aging.

## surface

- Printed fresh concrete floors.



# topeca floor desmoldante

colored powder release agent for molds used

decorative flooring

## recommendations

Waiting times for the application of Topeca Floor Desmoldante varies depending on the weather conditions (temperature and humidity).

Do not add any product to Topeca Floor Desmoldante.

Never spray water on the surface during application.

Avoid application with excess water on the surface.

## composition and characteristics

### Composition:

Fillers, pigments and specific additives.

### Characteristics:

Application temperature: 5-30 ° C;

Reaction to fire: Class A1.

## colour

Brown, light gray, anthracite, bordeaux, ocre and white.

## consumption

0,1 a 0,2 kg/m<sup>2</sup>.

## available in

Bag of 10Kg.

## storage

24 months from date of manufacture in original packaging closed under ice, heat and moisture.



# topeca floor desmoldante

colored powder release agent for molds used

decorative flooring

## preparation of surface

Previously prepare the concrete surface of the printed concrete.  
Avoid application over concrete with excess water on its surface.



## application

When the printed concrete is in a plastic state, sprinkle the surface and the respective molds with Topeca Floor Desmoldante completely covering all the support.



Print the selected concrete molds. It usually takes 3 molds + 1 flexible mold for the finials .  
The molds should be placed in rows starting at the area where it started concreting or where the concrete is hardening faster..



Put all templates in the pavement and work on these. Compress the molds using a step molds.  
When the finished mold is removed, the first used and placed immediately below the latter, and so forth. Iron together with perfect seals the mold and remove any excess with a spatula.



After 72 hours remove Topeca Floor Desmoldante washing with water and sweeping pressure ( 100-150 bar) and fan-shaped with an appropriate distance so as not to damage the support.  
When the surface is completely dry and free of moisture can apply a protective surface ( water repellent or varnish) obtaining a suitable protected against freezing pavement, dirt and easy to clean .



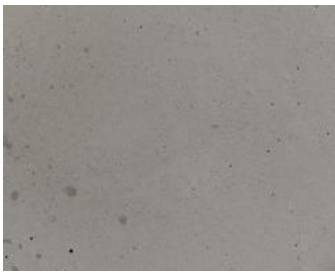
All tools and accessories required may be found in this catalog.

# topeca floor desmoldante

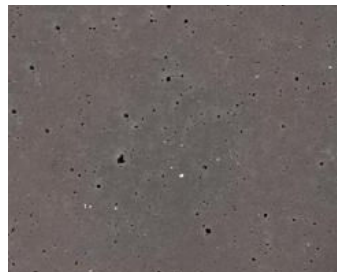
colored powder release agent for molds used

decorative flooring

## colors



light gray



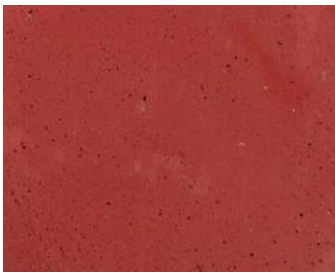
anthracite



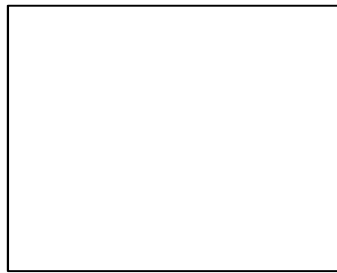
Brown



ocre



bordeaux



white

The colors displayed are printing colors may be slightly different from the colors marketed.



TOPECA, Lda - Rua D. Nuno Alvares Pereira, 53 - 2490-114 Cercal - Ourém - PORTUGAL

Tel.: 00 351 - 249 580 070 / Fax.: 00 351 - 249 580 079

[www.topeca.pt](http://www.topeca.pt) / [geral@topeca.pt](mailto:geral@topeca.pt)

Q.5.06.06.08-01

09/04/2014