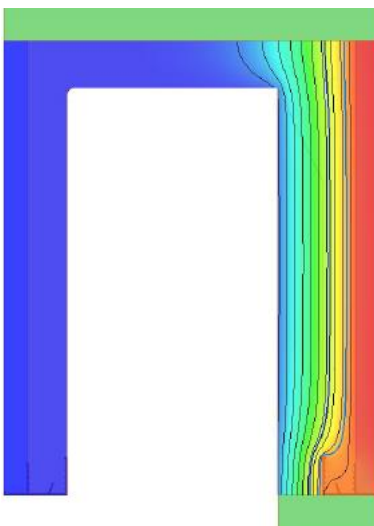
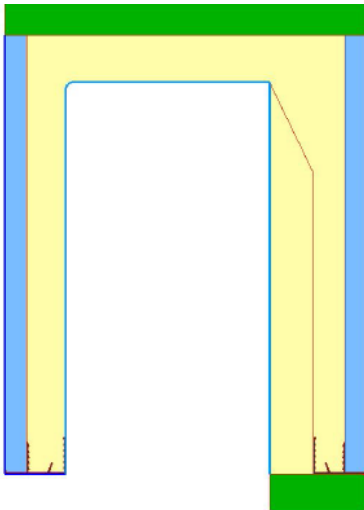


SOLE BOX

(depth 219 mm – height 300 mm)

With flush casing window with inner wall



Il contenuto del presente documento è di proprietà esclusiva di EDILCASS e ne è vietata la riproduzione anche parziale.

Node details

Primitives used for simulation:	6545
Frame width (Bf):	300.00 mm
Insulation panel's visible width (Bp):	-
Insulation panel's thickness (Dp):	-

External boundary conditions:

Temperature:	0.000 °C
Surface resistance:	0.04 m ² K/W

Inner boundary conditions:

Temperature:	20.000 °C
Surface resistance:	0.13 m ² K/W
Humidity:	60.00 %

Calculated results based on UNI EN ISO 10077-2:2012

Temperature difference indoor/outdoor:	20.000 °C
Conductivity 2D (Lf2D):	0.171 W/mK

Trasmittance (U): 0.569 W/m²K



ORDINE DEGLI ARCHITETTI DELLA PROVINCIA DI BARI
Dott. Arch. LEONARDO
1393

July 2018