



INSTRUCTION MANUAL

PRELIMINARY PREPARATION FOR FLOORING:

- The temperature of the environment for laminate flooring application should be min. +18°C, the floor temperature should be min. +15°C.
- The humidity rate of the environment for laminate flooring application should be max. 75%.

Surface properties of the floor:

- The floor must be dry, the surface must be clean, free from dust and dirt.
- The surface should be hard and smooth, ripples on the surface should be max. 4mm per metre.
- Application can be made on floors where water-based underfloor heating system are used. In such cases, special insulation material derivatives that provide low thermal conductivity resistance R (m² K/W) (ensuring good heat conduction) and have a value of SD>75m for application under parquet for protection against moisture should be used in underfloor heating systems. It should be ensured that the joints of the insulation material used should be closed with at least 20 cm tape in order to prevent the passage of moisture. Felt cannot be used as a protector.
- The surface to be laminated is suitable for laminate flooring application if the underfloor heating system is installed in the screed or concrete layer (the heating system is not above the concrete layer) in the electric or infrared based underfloor heating systems (surface temperature control). The surface temperature of the floor must not exceed max. 28 °C in all underfloor heating systems. In addition, all underfloor heating systems must be installed with the approval of the authorities responsible for the underfloor heating.
- In underfloor heating systems, the floor is heated at 16-20 °C for 1 week after laminate flooring application. After 1 week, the floor temperature is increased by 5 °C every day until the maximum temperature is reached.

Unsuitable Floors for Application:

- Floors covered with textile materials (carpets, rugs, etc.)
- Wet floors such as toilets and bathrooms
- Betopan and marble surfaces (**Mineral screed floors should be heated and excess moisture should be removed**).

Important points to be considered in laminate flooring application:

- Laminate floorings are applied on the floor with a floating system, therefore they are not screwed, nailed or glued.
- Laminate flooring should be started from the sunlit area.
- Parquet panels should be laid in the area of laying with a max. length of 10m and a max. width of 8m. In areas exceeding these dimensions, transition profiles should be used to leave 15mm gap after max. 10m length and max. 8m width.

INSTALLATION OF LAMINATE PANELS

1. In order to adapt the laminate panels to the floor temperature, keep them at room temperature for 48 hours by spreading them flat on the floor without removing them from the package or by stacking the packages. The difference between the laminate panels and the floor temperature should not exceed +3 degrees. Each package should be laid as soon as it is opened.

2. For damp proofing of the surface, PE foil with a thickness of approx. 0.2 mm should be laid on the floors with an overlap of 20 cm and covering the entire surface. The joints of the PE foil should be taped smoothly and continuously with moisture-proof tape after each overlap of approx. 20 cm (see PICTURE-1).

3. Start laying from the corner of the room with the male channel of the laminate panel facing the wall. When the flooring process is started, mount the apparatus that provides a gap of 15 mm between the wall and the laminate panels. Adjust the wall edge laminate panel width to be min 50mm. (see PICTURE- 2). Insert the laminate panel to be newly laid into the connection mechanism of the already laid panel by holding it obliquely from above and then lower it to the floor so that it sits flat on the floor and connect all flooring elements (see PICTURE-3). When laying laminate panels, the supporting edge of the laminate panel should never be hit directly with a hammer.

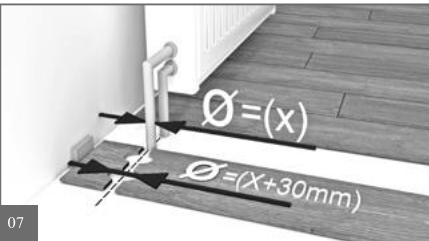
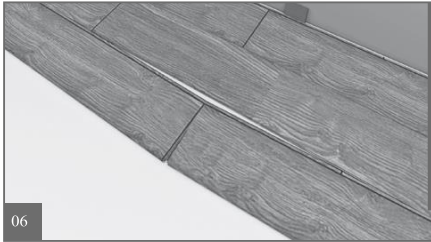
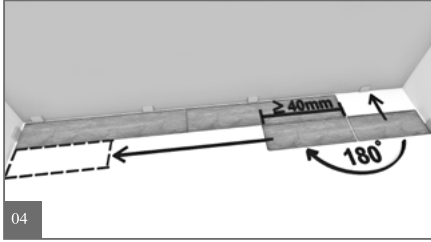
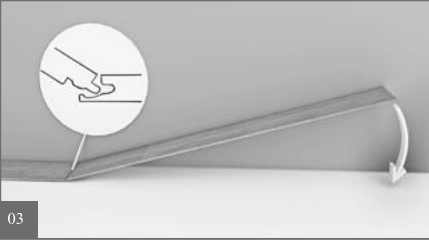
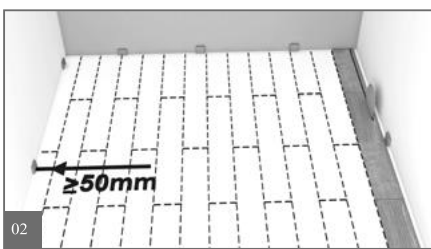
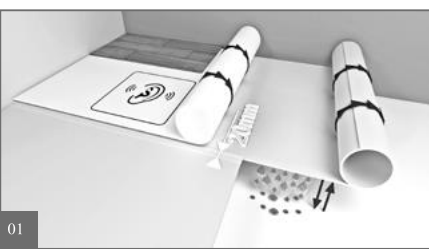
Mark the required length on the last panel of the first row (keep them facing each other) and cut off the excess. When cutting with a circular saw or jigsaw, the pattern should be at the bottom. If the panel piece left over from the first row is at least 400 mm long, start laying the second row with this piece. When moving to the next row, start with the laminate panel remaining from the previous row (see PICTURE-4).

Attention! Edge joints should be performed with a minimum offset of 200mm.

4. After the first row has been laid, place the laminate panel from the corner where the first row was started, with the long side of the panel obliquely to the connection mechanism and press it down so that it is flat on the floor. Repeat this process until the entire row is completely joined to the previous row (see PICTURE-5). (see PICTURE-6) Make sure that the panel does not slip along the narrow edges. (see PICTURE-6)

5. In case of pipe crossings, determine the position of the pipes by measuring and make markings on the flooring panels, taking into account the edge joint. Drill the holes at least 30 mm more than the pipe diameter. Cut the flooring panel by approaching the holes at an angle of 45 degrees. Fit and glue the cut out part in its place (see PICTURE-7).

6. The floor trims of doors are emptied to save the height of the laminate flooring from the floor. Lay the laminate panels up to the bottom of the door, leaving a margin of 15 mm on the wall/edge. Wall/door joints located at door edges that cannot be shortened (e.g. metal door jambs) must be sealed or covered with an elastic joint material or suitable cover profiles.(see PICTURE-8)



Rules to be Considered After Laminate Panels Are Laid:

- Place pieces made of plastic or felt under the legs of stationary or moving furniture. Reposition particularly heavy furniture by lifting them.
- Clean the wooden surface with a very well wrung, lint-free microfibre cloth without getting it wet. Do not use abrasive cleaning materials. Excess moisture must be removed immediately. Remove heavy and stubborn dirt with diluted general cleaning agents or laminate cleaners. Never use cleaners or care agents containing wax, oil or varnish.
- Do not sand the wooden floor.

"AGT Laminate Flooring warranty covers the resistance of its products against abrasion of the surface."

WARRANTY AND RETURN CONDITIONS:

1. The warranty period is 10 years for residences and 5 years for workplaces and starts from the date of receipt of the product by the consumer.
2. Regarding the products stated to be defective, the definition of the defect, the test results, if any, and the right of choice for the claim (*), together with the document that clearly shows the defect (picture, video, etc.), should be sent to our company as a manufacturer within the legal period.
(*) As a consumer, you have the following rights in accordance with Article 11 of the Law No. 6502 on the Protection of Consumers:
 - a) The right to withdraw from the contract by declaring that he/she is ready to return the sold product
 - b) The right to retain the sold product and request a discount from the sales price at the defect rate
 - c) The right to request free repair of the sold product at the seller's expense, unless it requires an excessive cost.
 - d) If possible, the right to demand that the sold product be replaced with a non-defective one.
3. After the documents are examined upon the application made, an on-site inspection may be carried out if necessary. In line with the results of the "Product Inspection Report" to be issued after these analyses and controls, it will be determined whether the problem, defect or damage stated to be present in the product is due to production and whether it is covered by the warranty.
4. Your claim for the defective or damaged products found to be within the scope of the warranty shall be met in accordance with your choice.
5. If repair is requested within the warranty period, the maximum repair period is 30 days.
6. The maximum service life of the product is 10 years.

CONDITIONS NOT COVERED BY THE WARRANTY:

- Specified Warranty Conditions become valid upon presentation of the Warranty Certificate.
 - When taking delivery of the material, the invoice and the Warranty Certificate, which is fully filled in by the seller and signed and stamped by the seller company, must be requested from the seller company and the document in question must be kept for the specified warranty period.
 - Warranty conditions are invalid if a Warranty Certificate, which is stamped and signed by the seller company and on which the invoice and delivery dates are specified, cannot be presented.
- Conditions Not Covered by the Warranty:**
- a) Sanding, scraping and polishing application on wooden surface,
 - b) Exposure of laminate panels to natural disasters such as fire, earthquake, flood, immersion in water for a certain period of time etc.
 - c) Laying laminate panels on wet floors such as sauna, bathroom, toilet, open terrace etc.
 - d) Problems arising from non-compliance with the rules specified in the instruction manual,
 - e) Non-compliance of the floor determined for laminate flooring application with the rules specified in the instruction manual
 - f) Abrasion, breakage and scratches that may occur as a result of improper assembly, disassembly and destruction
 - g) Inappropriate pressure, impact and mechanical damage to the laminate panels
 - h) The installation company is responsible for the problems arising as a result of installation not in accordance with the instruction manual.
 - i) Before the installation process, the seller company shall be responsible for the control of the floor of the residence or workplace where the laminate panels will be laid. If there is a situation contrary to the instruction manual, the seller company must inform the customer about it, and if the customer insists on the inappropriate installation of laminate panels, the seller company must obtain a written document from the customer. Otherwise, the seller company shall be responsible for the problems arising in connection with the wooden surface.
 - j) In case of deterioration of the surface as a result of the use of acid and similar chemicals, the product is not covered by the warranty.
 - k) Metal or stone pieces may scratch the material. Therefore, the product must be protected against such materials by the user.
 - l) In case of water leaking from the walls and window edges of the building, the product is not covered by the warranty.
 - m) The product should not be used on stair steps.
 - n) The installation process carried out in violation of this situation is not covered by the warranty. (For example; the use of a class 31 material in workplaces where human movement is intense, or the use of a class 32 product in an area where human movement is very intense, and the mixed installation of class 31 and class 32 or 33 products)

No other organisation other than AGT may claim any other warranty conditions other than these conditions.